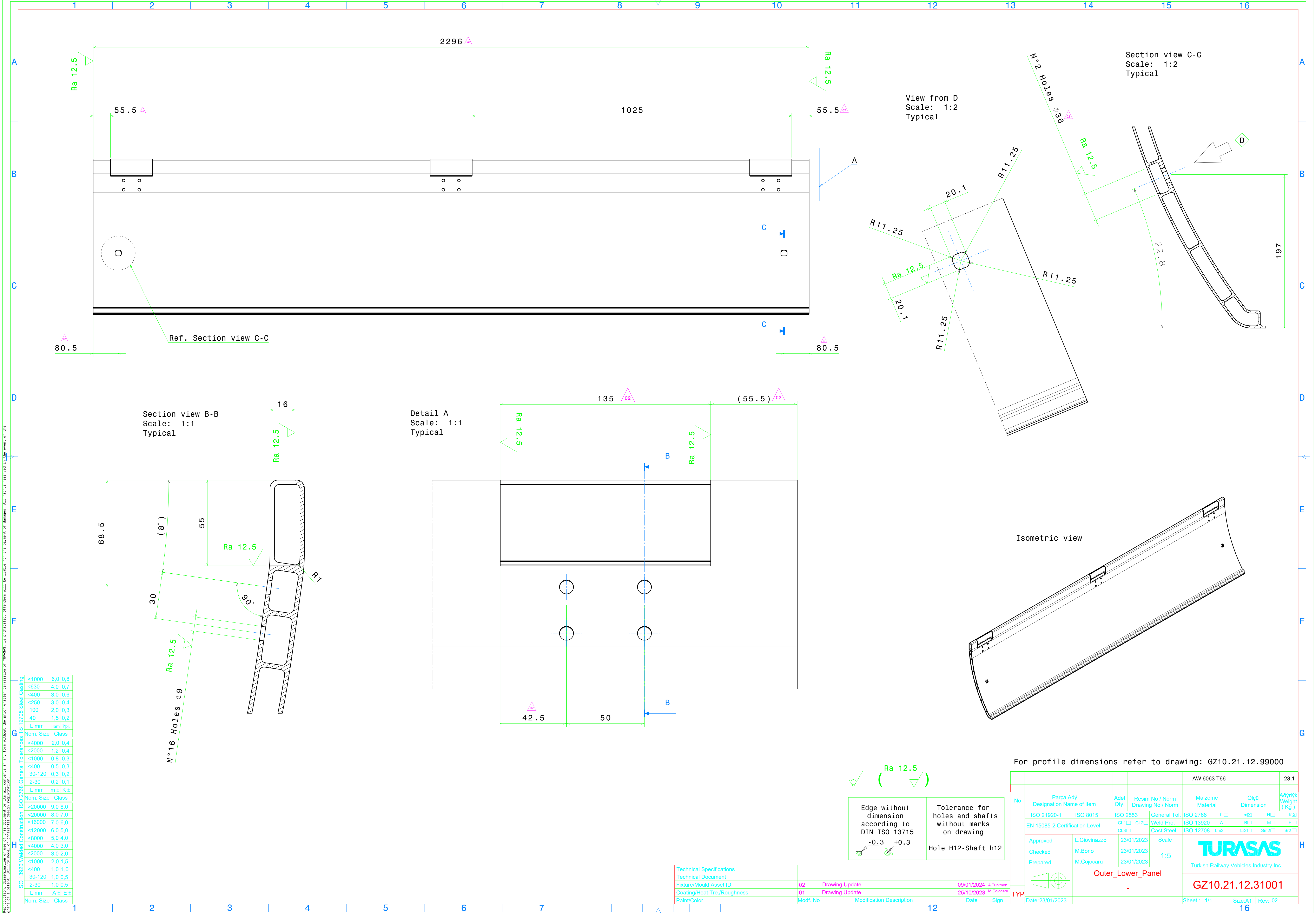


Reproduction or use of this document or its all contents in any form without the prior written permission of TURASAS is prohibited. Offenders will be liable for the payment of damages. All rights reserved in the event of the right of a patent, utility model, or trademark.

ISO 13920 Welded Construction		
Nom.	Size	Class
<1000	6,0	0,8
<630	4,0	0,7
<400	3,0	0,6
<250	3,0	0,4
100	2,0	0,3
40	1,5	0,2
L mm	Ham.	Ypl.
ISO 2768 General Tolerances		
Nom.	Size	Class
<4000	2,0	0,4
<2000	1,2	0,4
<1000	0,8	0,3
<400	0,5	0,3
30-120	0,3	0,2
2-30	0,2	0,1
L mm	m ±	K ±
ISO 13920 Welded Construction		
Nom.	Size	Class
>20000	9,0	8,0
<20000	8,0	7,0
<16000	7,0	6,0
<12000	6,0	5,0
<8000	5,0	4,0
<4000	4,0	3,0
<2000	3,0	2,0
<1000	2,0	1,5
<400	1,0	1,0
30-120	1,0	0,5
2-30	1,0	0,5
L mm	A ±	E ±
Nom.	Size	Class



✓ ( Ra 12.5 ) ✓

Edge without dimension according to DIN ISO 13715  
-0.3 +0.3

Tolerance for holes and shafts without marks on drawing  
Hole H12-Shaft h12

Technical Specifications					
Technical Document					
Fixture/Mould Asset ID:	02	Drawing Update	09/01/2024	A. Türkmen	
Coating/Heat Tre./Roughness	01	Drawing Update	25/10/2023	M. Cojocar	
Paint/Color	Modif. No	Modification Description	Date	Sign	

				AW 6063 T66		23,1
No	Parça Adı Designation Name of Item	Adet Qty.	Resim No / Norm Drawing No / Norm	Malzeme Material	Ölçü Dimension	Ağırlık Weight (Kg)
	ISO 21920-1	ISO 8015	ISO 2553	General Tol.	ISO 2768	f □ mX □ H □ KX □
	EN 15085-2 Certification Level		CL1 □ CL2 □	Weld Pro.	ISO 13920	A □ B □ E □ F □
			CL3 □	Cast Steel	ISO 12708	Ln2 □ Lr2 □ Sm2 □ Sr2 □
Approved	L. Giovino	23/01/2023	Scale	<div>TURASAS</div> <div>Turkish Railway Vehicles Industry Inc.</div> <div>GZ10.21.12.31001</div>		
Checked	M. Borlo	23/01/2023	1:5			
Prepared	M. Cojocar	23/01/2023				
Outer_Lower_Panel						
-						
Date: 23/01/2023				Sheet: 1/1	Size: A1	Rev: 02